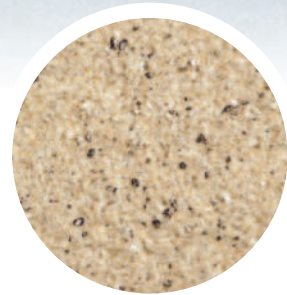
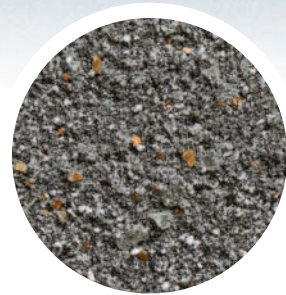




WORLDDECO

Rooted in the local culture of Malaysia, we manufacture wide range of textured finishes, including special effects paints and spray sand/granite coatings. Our products encapsulate the essence of the region while embracing international design trends.

**A World where
Décor met
Excellence**



PRODUCT :

GRAN MICALUX (GMX)

STONELUX (SLX)

CERATEX (CRX)

FEATURES :

- Unique granite-inspired texture.
- Lively, sparkling finish adds charm.
- Enhanced attractiveness for any space.

- Authentic stone-like appearance.
- Striking pattern effects for visual interest.
- Superior durability suited for various environments.

- Sleek, polished surface for a refined appearance.
- Features a novel blend for enhanced capabilities.
- Suitable for a wide range of applications.

COVERAGES FOR :

1L PRIMER COAT	7-9 M²	7-9 M²	7-9 M²
25KG TEXTURE COAT	6-7 M²	6-7 M²	7-8 M²
1L TOPCOAT	7-9 M²	7-9 M²	7-9 M²

IMPORTANT :

- Surface shall be dry and free from dirt, oil, grease and other contaminants. All cracks or defective substrate be repaired with suitable cement filler.

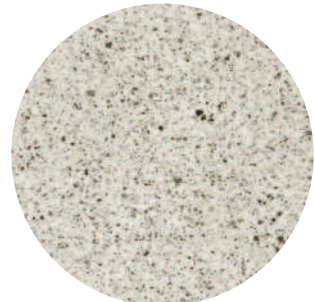
WORLD DECO PAINT (M) SDN BHD (1330625-W)

No.26, Jalan Korporat 5/KU9, Taman Perindustrian Meru, 42200 Klang, Selangor, Malaysia.
www.worlddeco.com.my | @worlddeco.group

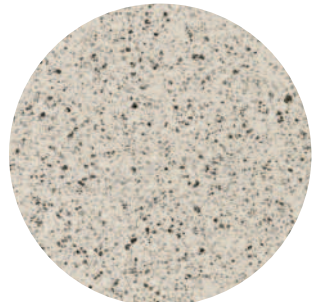


GRAN MICALUX

COVERAGE :
6-7 M²



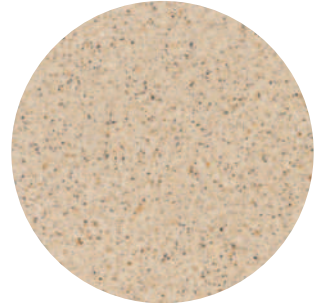
▲ GMX-03



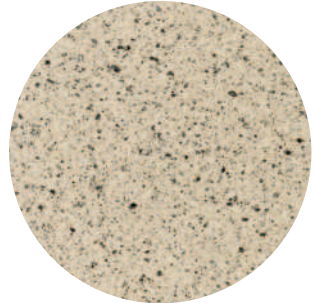
▲ GMX-13



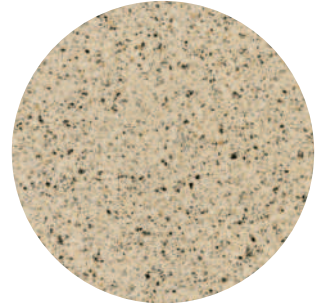
▲ GMX-08



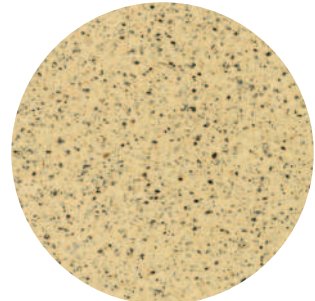
▲ GMX-05



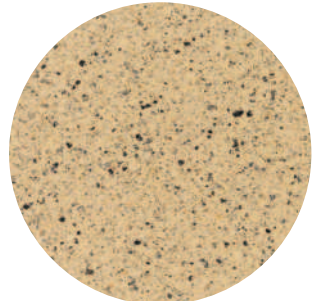
▲ GMX-10



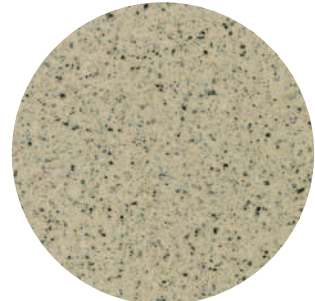
▲ GMX-20



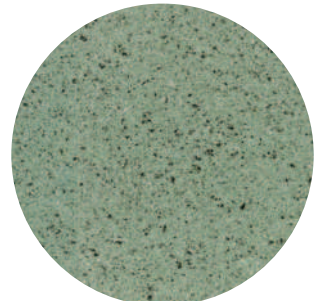
▲ GMX-15



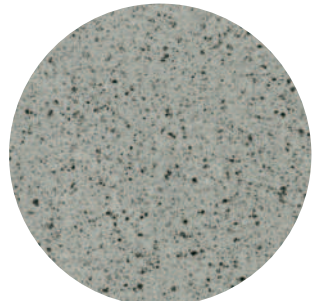
▲ GMX-02



▲ GMX-06



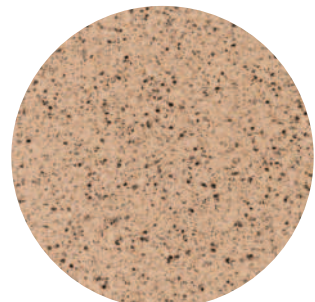
▲ GMX-18



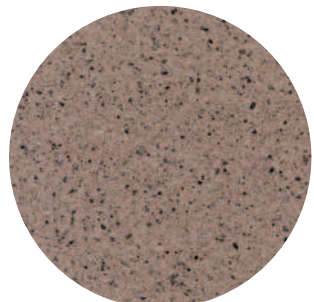
▲ GMX-01



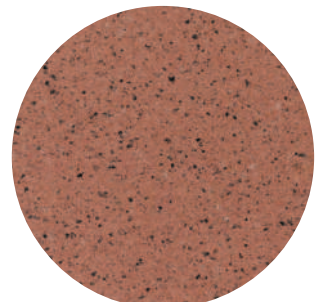
▲ GMX-30



▲ GMX-07



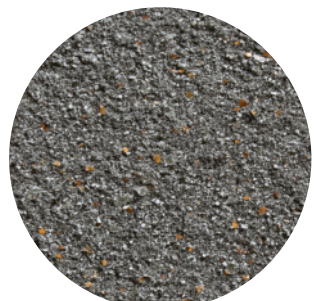
▲ GMX-09



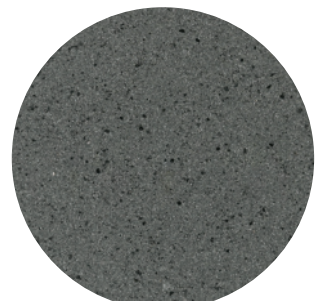
▲ GMX-16



▲ GMX-25



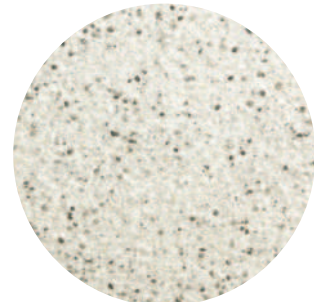
▲ GMX-22



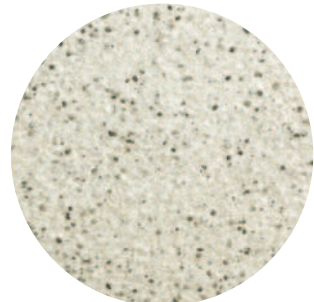
▲ GMX-23

STONELUX

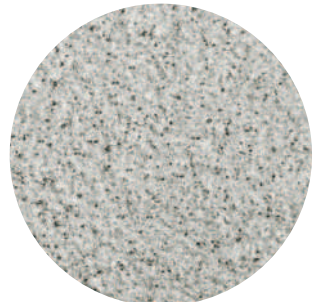
COVERAGE :
6-7 M²



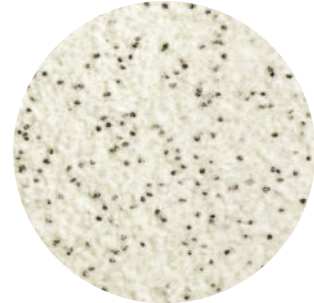
▲ SLX-07



▲ SLX-02



▲ SLX-06



▲ SLX-03



▲ SLX-10



▲ SLX-05



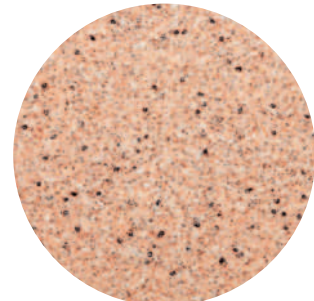
▲ SLX-08



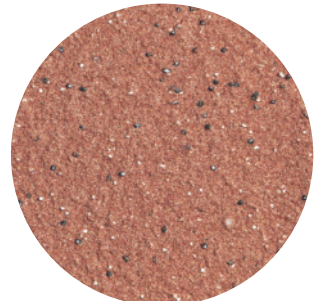
▲ SLX-11



▲ SLX-20



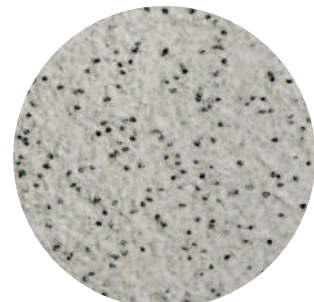
▲ SLX-12



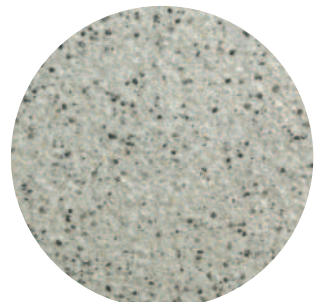
▲ SLX-14



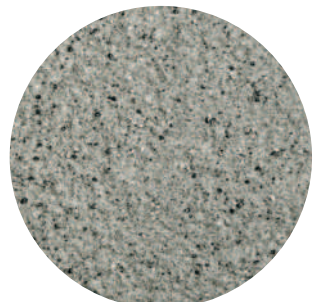
▲ SLX-19



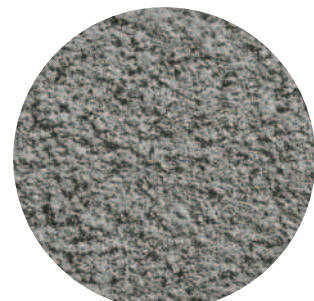
▲ SLX-09



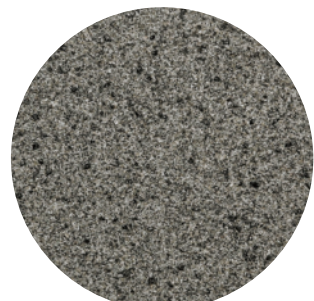
▲ SLX-04



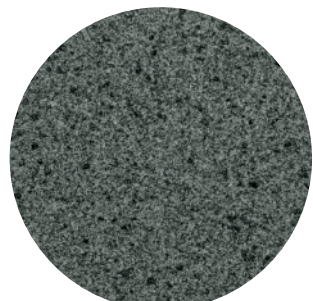
▲ SLX-01



▲ SLX-25



▲ SLX-18



▲ SLX-23

Colours in print and on-screen may vary from actual samples due to printing processes and variations in computer display resolutions. Please refer to physical samples for accurate representation.

CERATEX

COVERAGE :
7-8 M²



▲ CRX-03



▲ CRX-07



▲ CRX-02



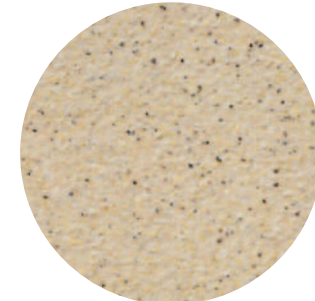
▲ CRX-10



▲ CRX-09



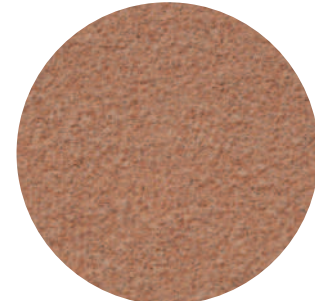
▲ CRX-13



▲ CRX-01



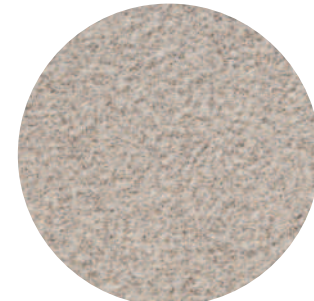
▲ CRX-14



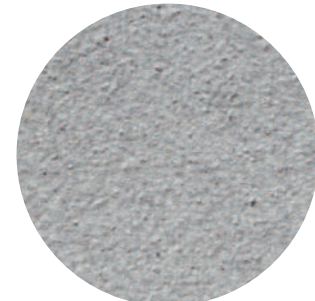
▲ CRX-15



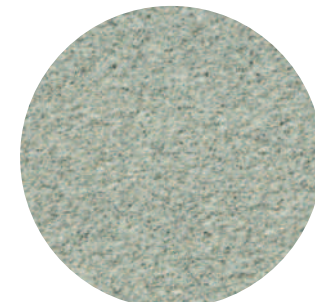
▲ CRX-05



▲ CRX-19



▲ CRX-27



▲ CRX-11



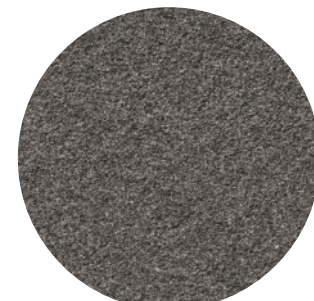
▲ CRX-30



▲ CRX-23



▲ CRX-25



▲ CRX-22



▲ CRX-29